

Health and Disability

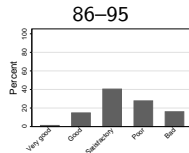
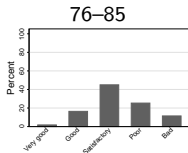
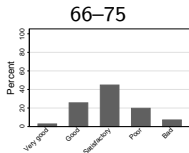
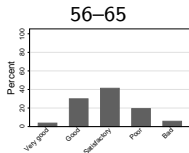
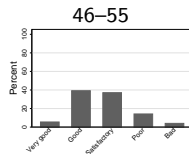
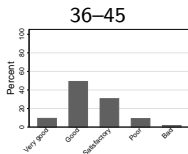
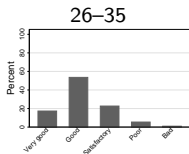
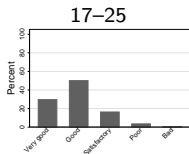
Descriptives based on SOEP, ELSA and SHARE

Sarah Okoampah
University of Duisburg-Essen

December 15, 2015

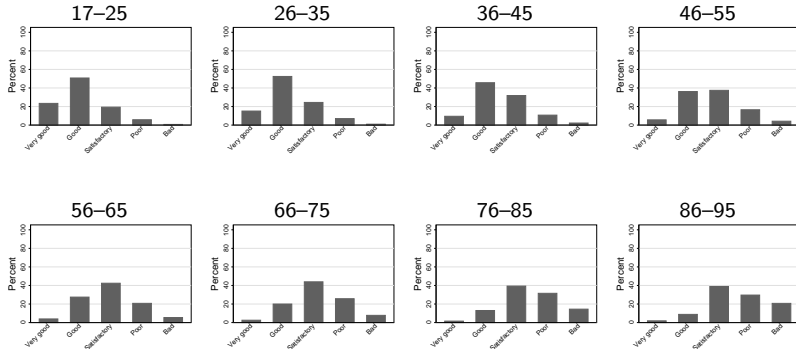
SOEP

Self-Assessed Health by Age Group, Males



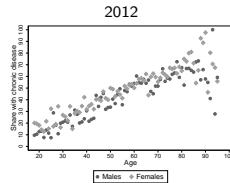
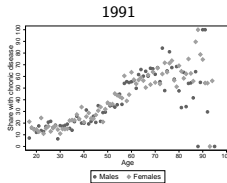
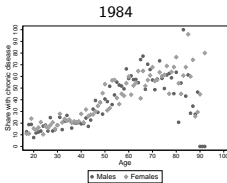
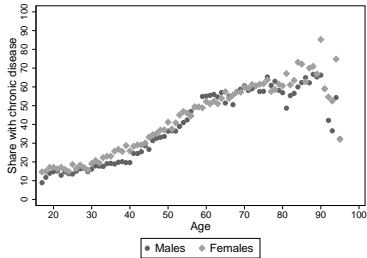
Weights provided by SOEP are used.

Self-Assessed Health by Age Group, Females



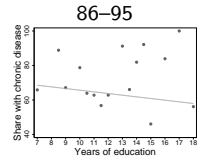
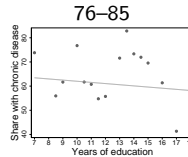
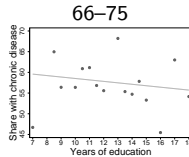
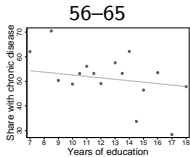
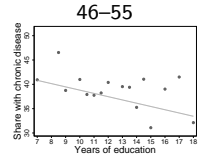
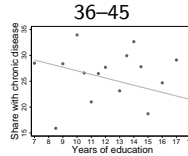
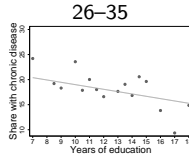
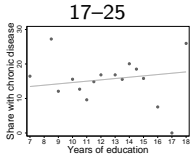
Weights provided by SOEP are used.

Chronic Disease by Age and Gender



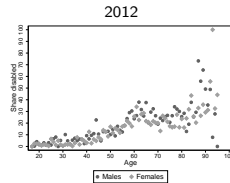
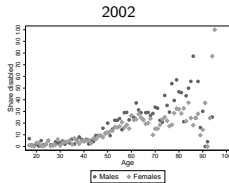
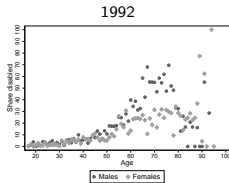
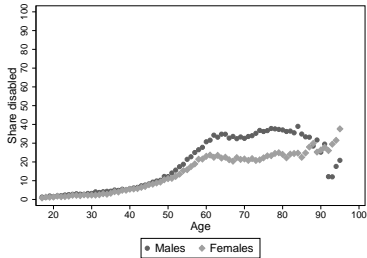
Weights provided by SOEP are used.

Chronic Disease by Education and Age Group



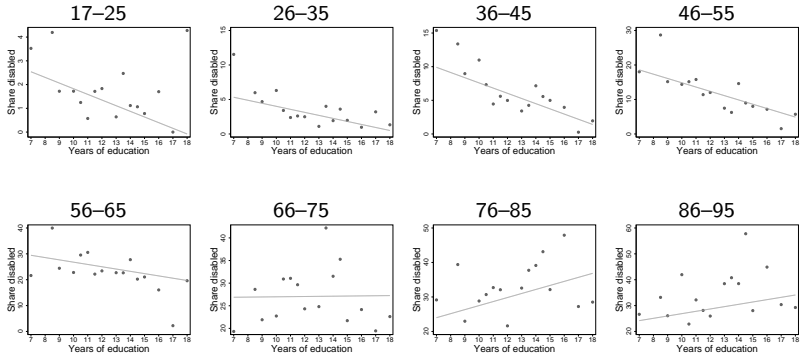
Weights provided by SOEP are used.

Partial or Severe Disability by Age and Gender



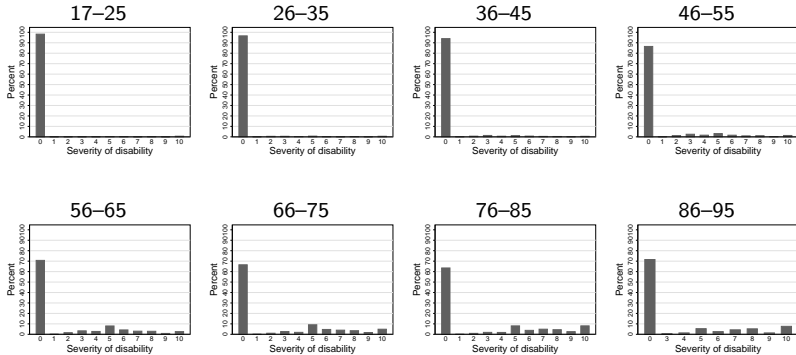
Weights provided by SOEP are used.

Partial or Severe Disability by Education and Age Group



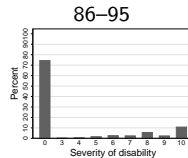
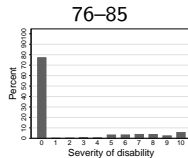
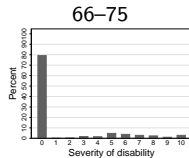
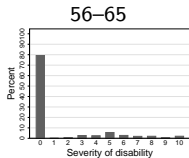
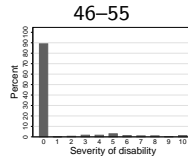
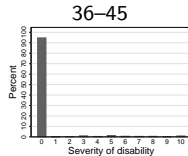
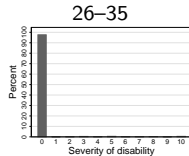
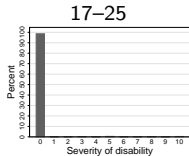
Weights provided by SOEP are used.

Severity of Disability by Age Group, Males



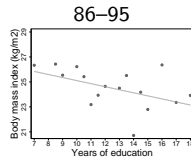
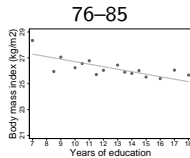
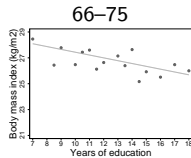
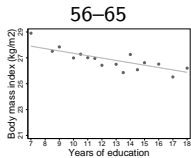
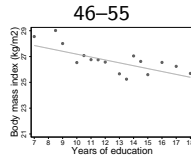
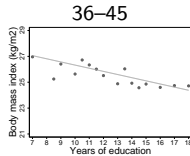
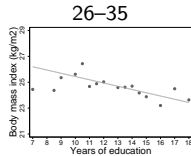
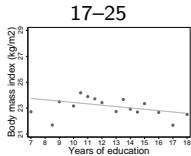
Weights provided by SOEP are used.

Severity of Disability by Age Group, Females



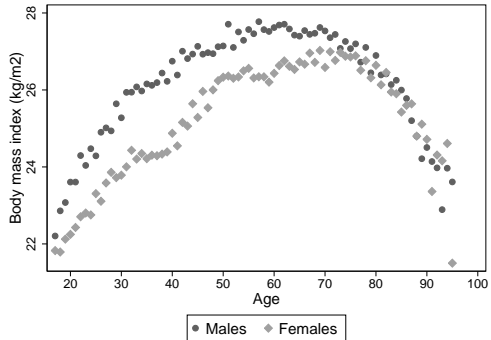
Weights provided by SOEP are used.

Body Mass Index by Education and Age Group



Weights provided by SOEP are used.

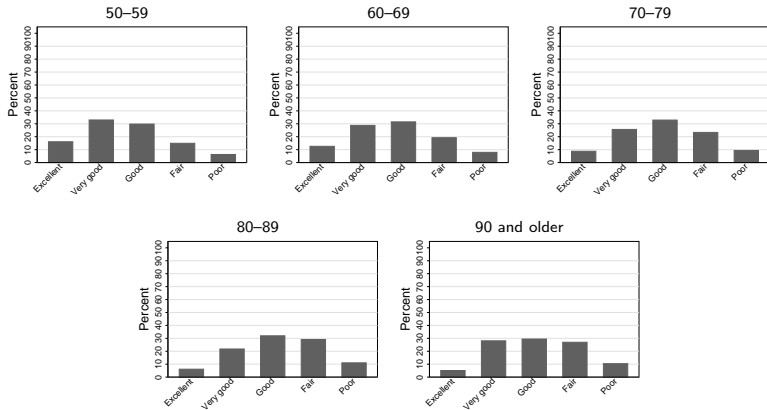
Body Mass Index by Age and Gender



Weights provided by SOEP are used.

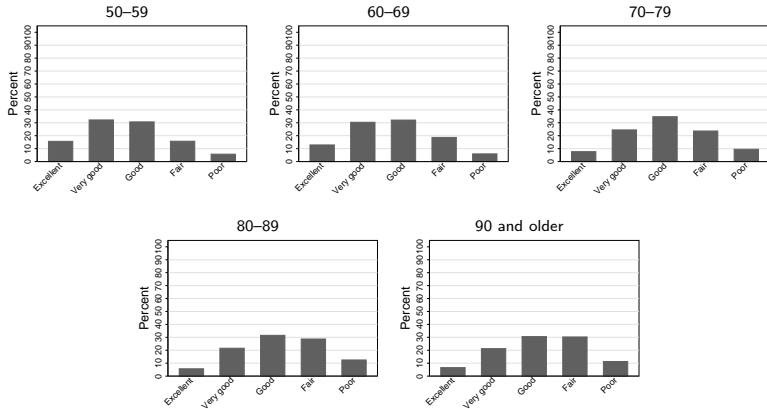
ELSA

Self-Assessed Health by Age Group, Males



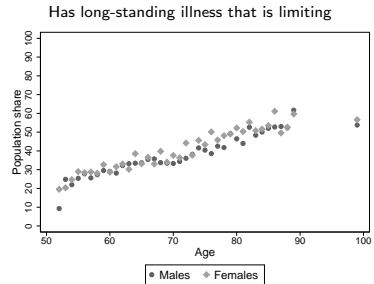
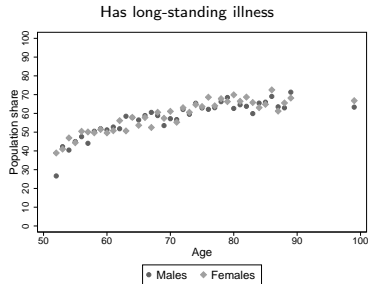
Weights provided by ELSA are used. Information is missing in wave 3.

Self-Assessed Health by Age Group, Females



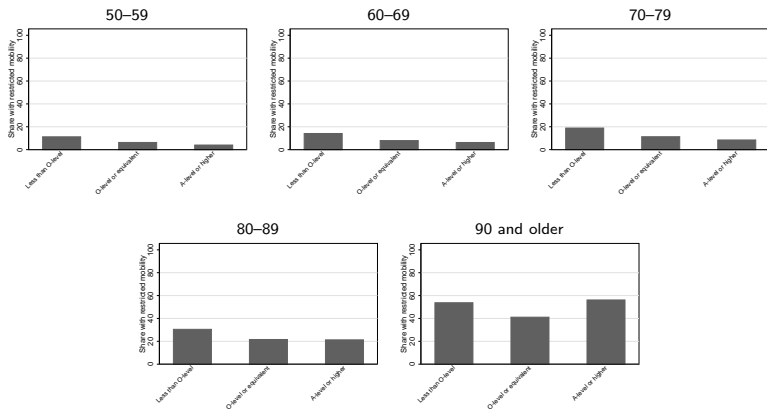
Weights provided by ELSA are used. Information is missing in wave 3.

Long-standing Illness by Age and Gender



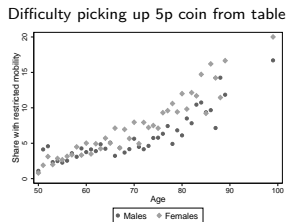
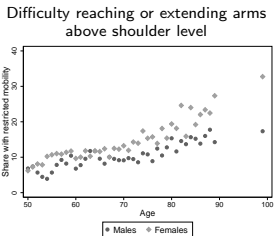
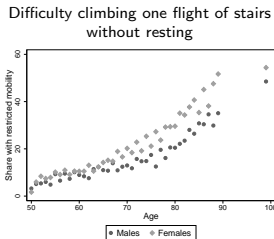
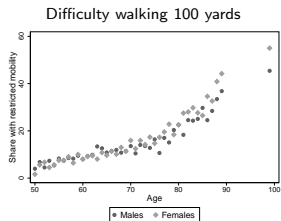
Weights provided by ELSA are used. Individuals aged 90 or older are pooled and coded 99. Information is missing in wave 1.

Restricted Mobility by Education and Age Group



Mobility: "Difficulty walking 100 yards". Weights provided by ELSA are used. Information is missing in waves 1 and 2.

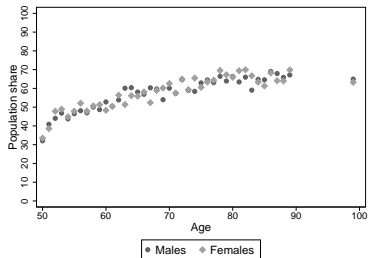
Restricted Mobility by Age and Gender



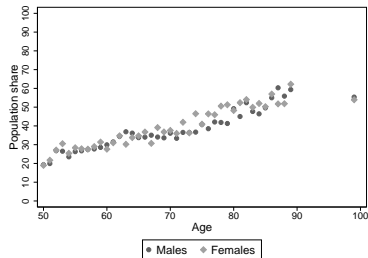
Weights provided by ELSA are used. Individuals aged 90 or older are pooled and coded 99. Information is missing in waves 1 and 2.

Long-standing Illness, Disability or Infirmary by Age and Gender

Has any long-standing illness, disability or infirmity

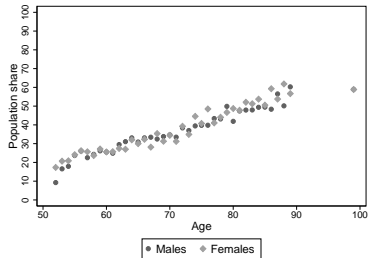


This illness or disability is limiting



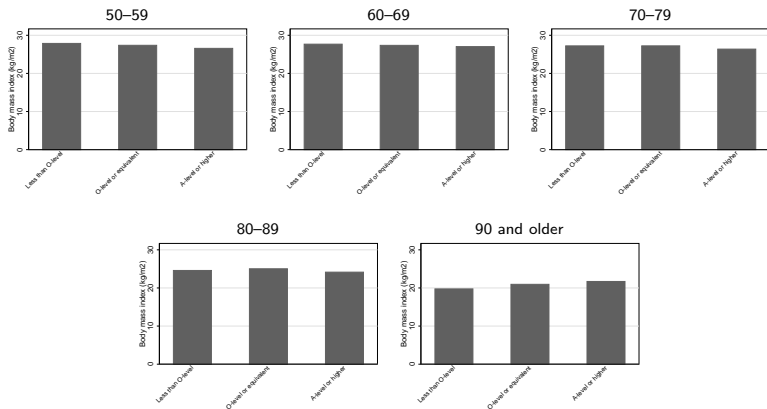
Weights provided by ELSA are used. Individuals aged 90 or older are pooled and coded 99. Information is missing in waves 2 and 6.

Self-reported Health Problem or Disability that Limits Paid Work



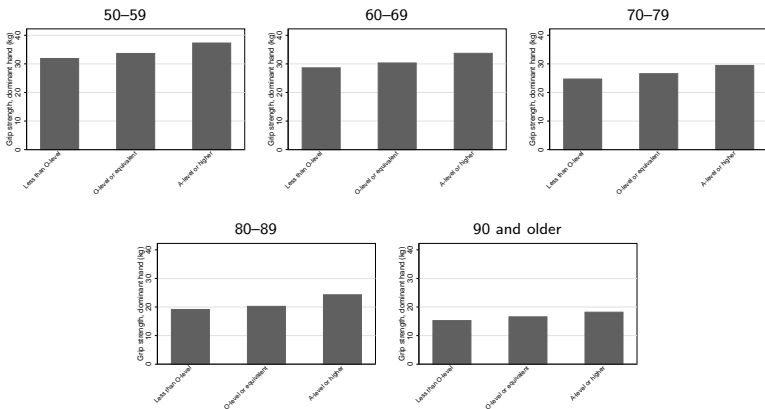
Weights provided by ELSA are used. Individuals aged 90 or older are pooled and coded 99. Information is missing in wave 1.

Body Mass Index by Education and Age Group



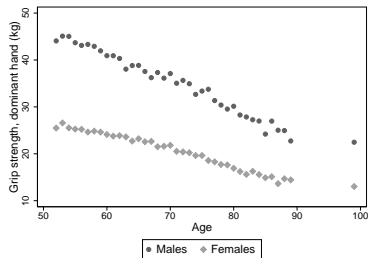
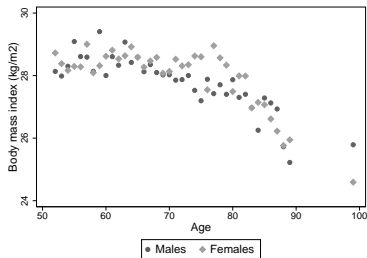
Weights provided by ELSA are used. Height and weight were recorded by nurses in waves 2, 4 and 6.

Grip Strength by Education and Age Group



Weights provided by ELSA are used. Grip strength was recorded by nurses in waves 2, 4 and 6.

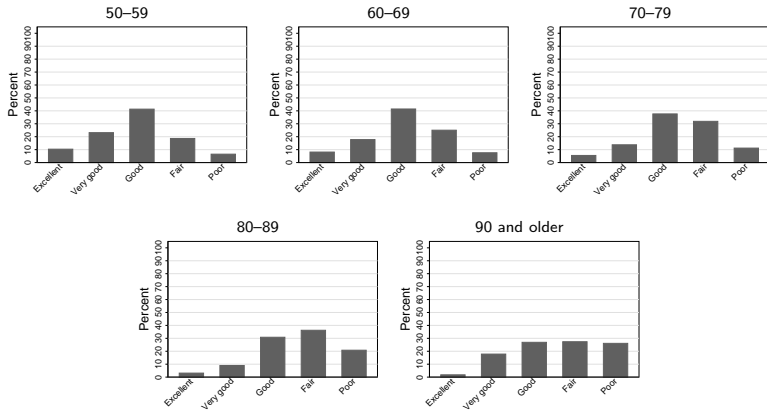
Body Mass Index and Grip Strength by Age and Gender



Weights provided by ELSA are used. Individuals aged 90 or older are pooled and coded 99. Height, weight and grip strength were recorded by nurses in waves 2, 4 and 6.

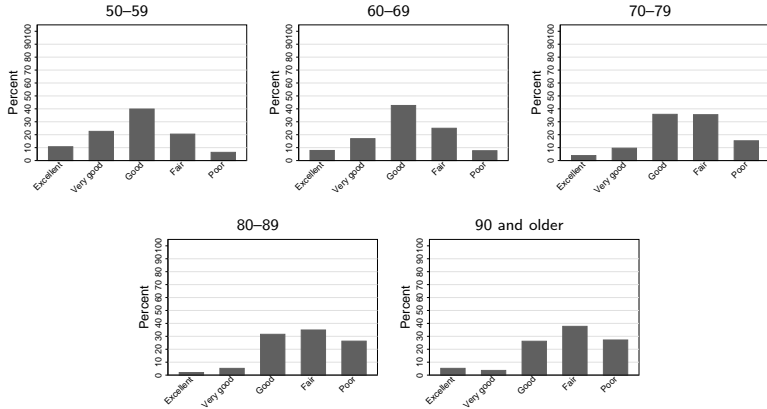
SHARE

Self-Assessed Health by Age Group, Males



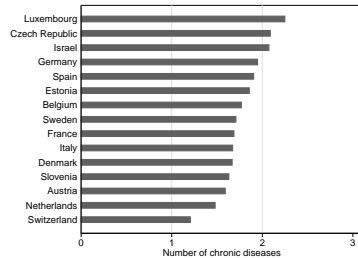
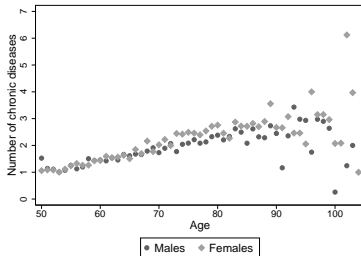
Weights provided by SHARE are used. Based on data from wave 5.

Self-Assessed Health by Age Group, Females



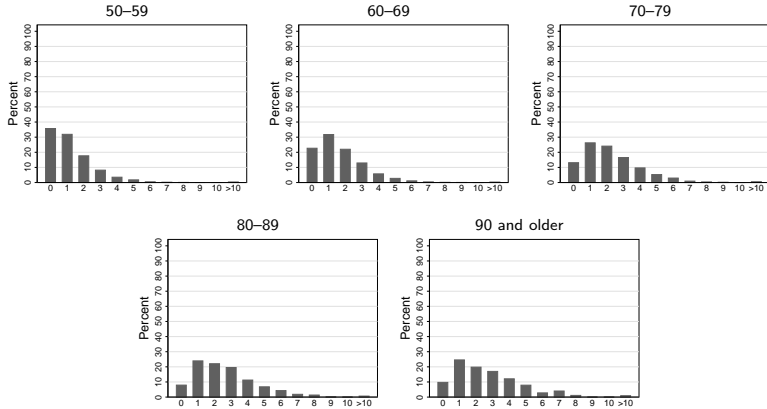
Weights provided by SHARE are used. Based on data from wave 5.

Number of Chronic Diseases by Age and Gender, by Country



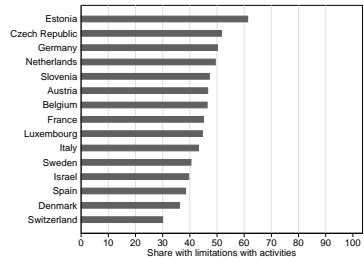
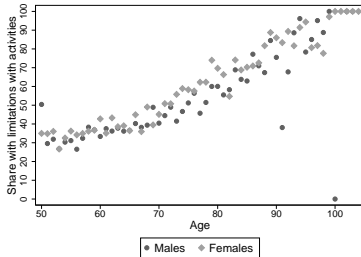
Weights provided by SHARE are used. Based on data from wave 5.

Number of Chronic Diseases by Age Group



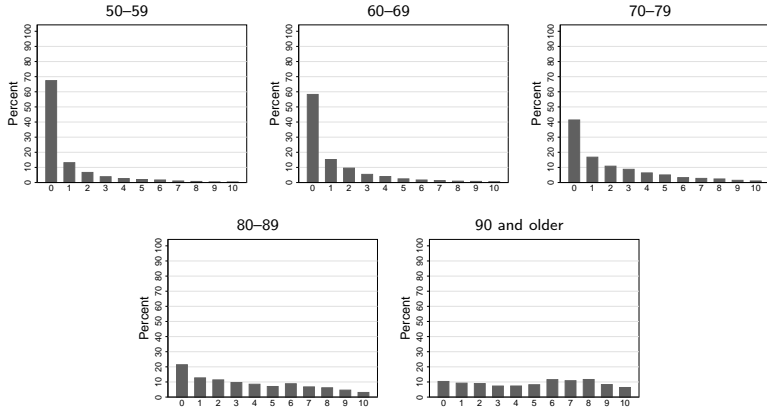
Weights provided by SHARE are used. Based on data from wave 5.

Limitations with Activities by Age and Gender, by Country



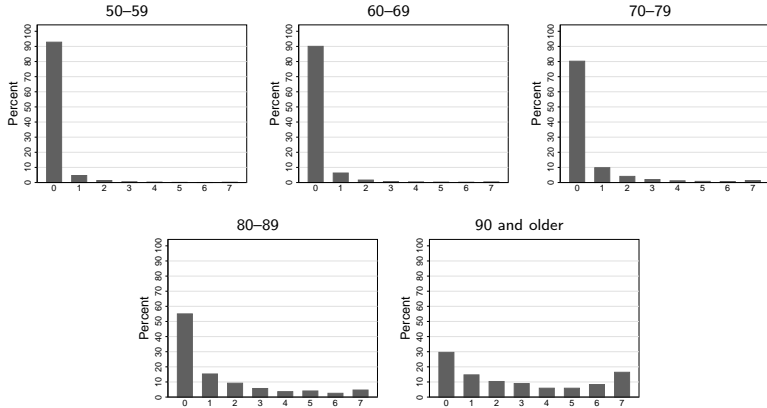
Weights provided by SHARE are used. Based on data from wave 5.

Arm Function and Fine Motor Limitations by Age Group



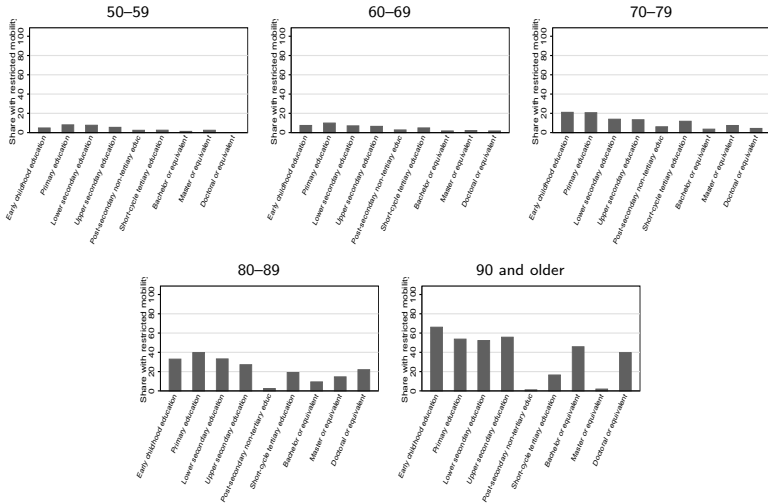
Weights provided by SHARE are used. Based on data from wave 5.

Limitations with Instrumental Activities of Daily Living by Age Group



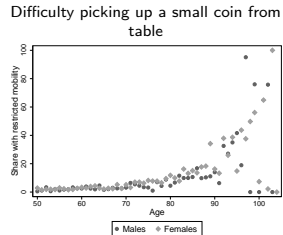
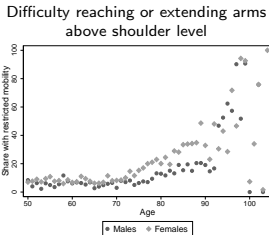
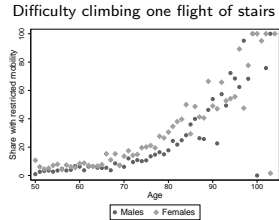
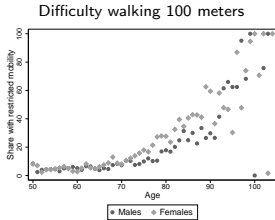
Weights provided by SHARE are used. Based on data from wave 5.

Restricted Mobility by Education and Age Group



"Difficulty walking 100 meters". Weights provided by SHARE are used. Based on data from wave 5.

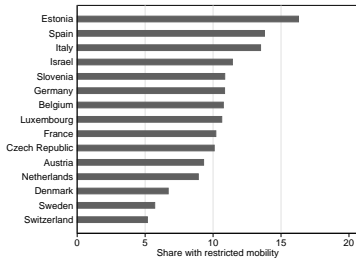
Restricted Mobility by Age and Gender



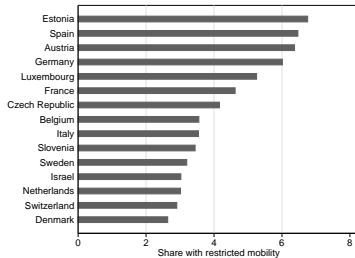
Weights provided by SHARE are used. Based on data from wave 5.

Restricted Mobility by Country

Difficulty walking 100 meters

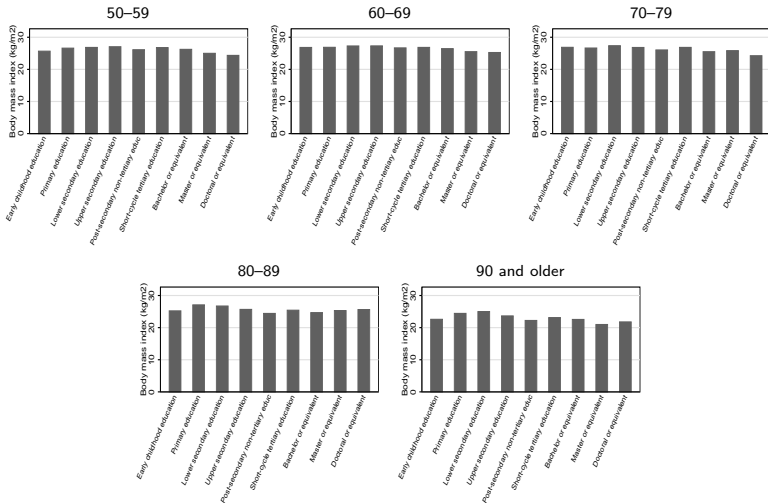


Difficulty picking up a small coin from a table



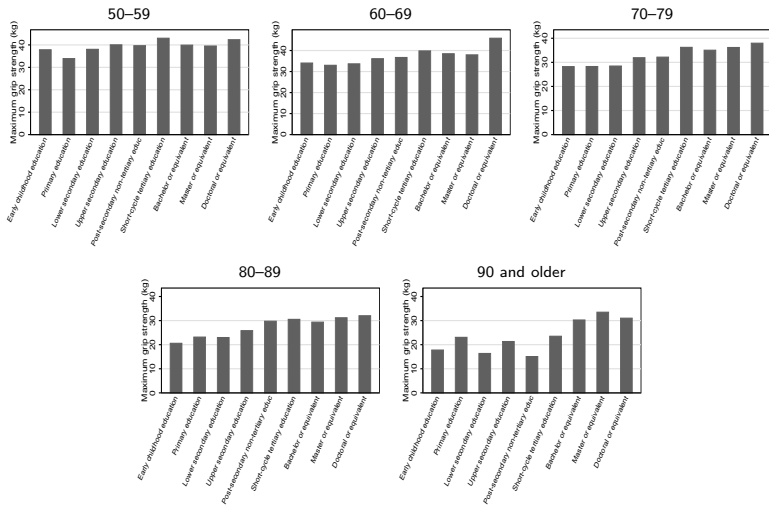
Weights provided by SHARE are used. Based on data from wave 5.

Body Mass Index by Education and Age Group



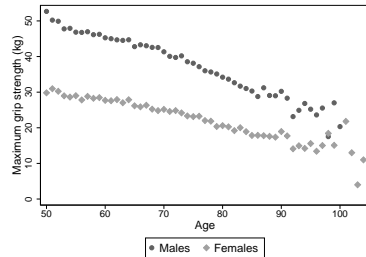
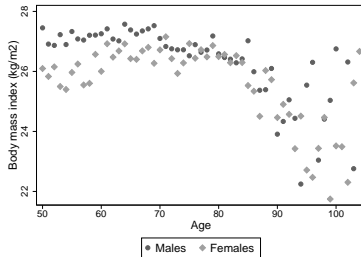
Weights provided by SHARE are used. Based on data from wave 5.

Grip Strength by Education and Age Group



Weights provided by SHARE are used. Based on data from wave 5.

Body Mass Index and Grip Strength by Age and Gender



Weights provided by SHARE are used. Based on data from wave 5.